



SKULTUNA  
1607

HOME ACCESSORIES  
[WWW.SKULTUNA.COM](http://WWW.SKULTUNA.COM)



## SKULTUNA 1607 - THE ANCIENT TRADITION OF MODERNITY

For over 400 years the lustre of Skultuna brass has illuminated the world. With classic designs from the time of our founder King Karl IX of Sweden, as well as with ground breaking antiquities of tomorrow by leading international designers like GamFratesi, Lara Bohinc, Luca Nichetto, Monica Förster, Richard Hutten and Claesson Koivisto Rune to name a few.

And herein lies the formula to why today Skultuna can be found at leading department stores all around the world, has won a number of international design awards and regularly exhibits at the leading international design fairs - we have always been, and will always be, one part traditional craftsmanship and one part modernity. The result can be seen in the following pages and at [skultuna.com](http://skultuna.com)

## THE DESIGNERS

- PIERRE FORSSELL
- GAMFRATESI
- MONICA FÖRSTER
- THOMAS SANDELL
- RICHARD HUTTEN
- OLOF KOLTE
- LARA BOHINC
- CLAESSON KOIVISTO RUNE
- LUCA NICHETTO
- FOLKFORM
- BERNADOTTE KYLBERG
- MARIA NILSDOTTER
- OLIVIA HERMS
- IVAR ÅLENIUS BJÖRK
- ERIC ERICSON
- PAOLO DELL'ELCE
- EMMA OLBERS
- ILSE CRAWFORD
- NICK ROSS
- LOUISE LILJENCRANTZ
- MARTIN BERGSTRÖM
- OBJECTHOOD







RETRO NEWS –  
CANDLEHOLDER ROSETT  
DESIGN PIERRE FORSELL



RETRO NEWS – THE SKULTUNA ROSE  
DESIGNED 1980'S



NEWS – CANDLEHOLDER PIPE  
DESIGN BERNADOTTE & KYLBERG



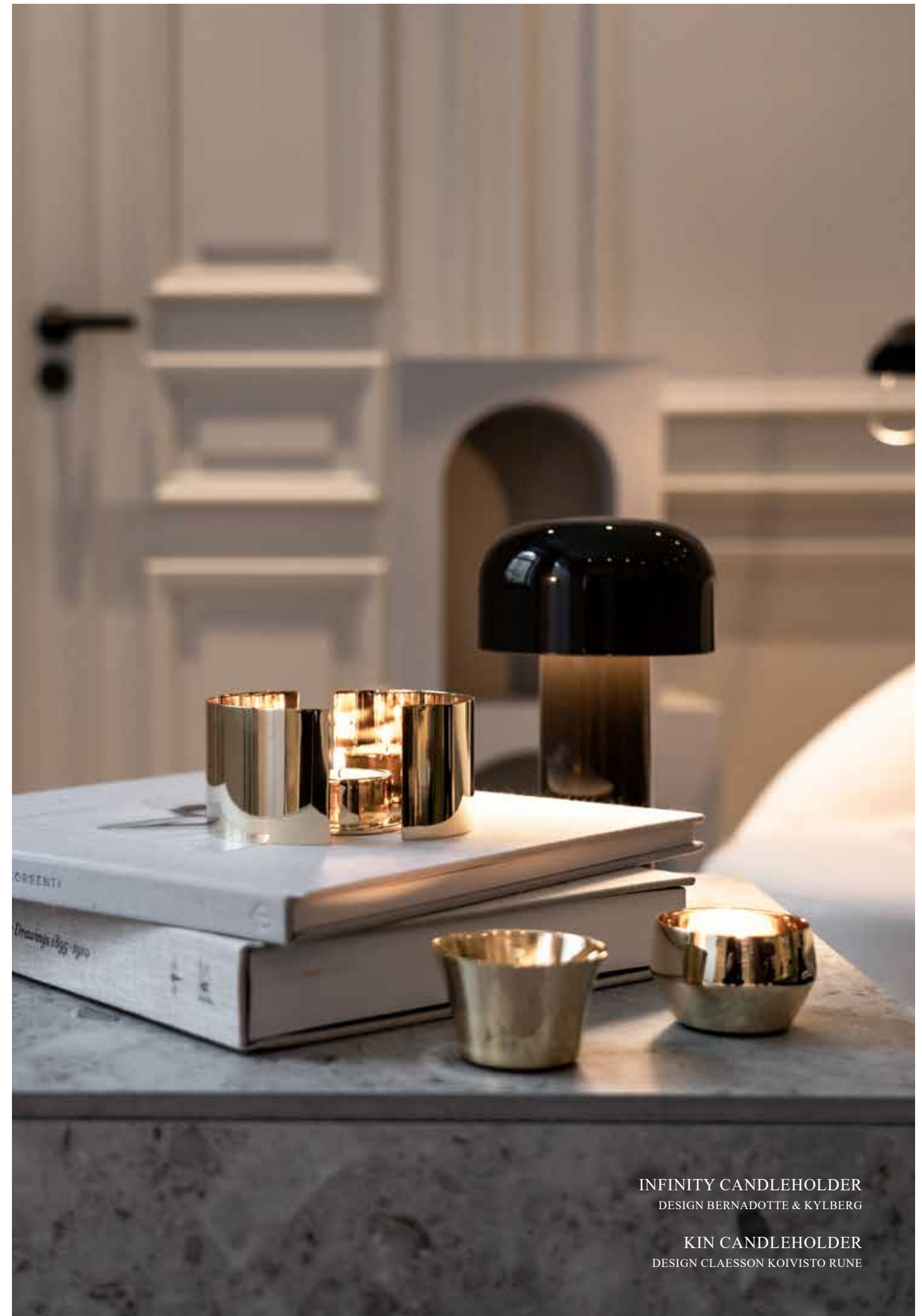




LISA LARSON X SKULTUNA



KARUI TRAY IN TAUPE GREY  
DESIGN GAMFRATESI



INFINITY CANDLEHOLDER  
DESIGN BERNADOTTE & KYLBERG

KIN CANDLEHOLDER  
DESIGN CLAESSON KOIVISTO RUNE



## FLWR

### BERNADOTTE & KYLBERG

This spring Skultuna has teamed up with the Stockholm based design studio Bernadotte & Kylberg again. The Candleholder; “Inspired by wild flowers on the side of a path through leafy and magical Swedish summer forests.” The candleholders are made of solid brass, the iconic material of Skultuna since the start in 1607.



CANDLEHOLDER BK.FLWR  
DESIGN BERNADOTTE & KYLBERG



CANDLEHOLDER BK.FLWR SILVER  
DESIGN BERNADOTTE & KYLBERG



PRODUKTSIDOR

VASES AND FLOWER POTS

POMME VASE & CANDLEHOLDER



BRASS, SMALL  
No 651 H: 9,5 cm



DARK GREY, SMALL  
No 651-G H: 9,5 cm



WHITE, SMALL  
No 651-W H: 9,5 cm



BRASS, MEDIUM  
No 651-M H: 15 cm



DARK GREY, MEDIUM  
No 651-M-G H:15 cm



WHITE, MEDIUM  
No 651-M-W H: 15 cm

BOULE VASES



BRASS  
No 784-XS H: 13 cm



BRASS  
No 784-S H: 23 cm



BRASS  
No 784-L H: 21 cm

LILY CANDLESTICK & VASE



BRASS  
No 782 & VASE V782  
H: 12 cm



SILVER PLATED  
No 782-S & VASE V782  
H: 12 cm



VASE  
No V782

BEAD VASES



SET OF 3 PCS  
No 777  
H: 14,1 cm, 13,3 cm, 14,4 cm,

DESIGN STUDIO SKULTUNA

Pomme is a spherical vase & candle holder made of glass and polished brass. The shape of Pomme is inspired by the natures round shapes. The name Pomme comes from the French word for apple, from which the product borrowed its shape. Pomme can be used as a vase for cut flowers and the base as a candle holder for tealights. Polished brass meets glass, shiny materials yet fragile.

DESIGN OLIVIA HERMS

The French-German designer Olivia Herms is currently working for the world famous designer Konstantin Greic, previously she has worked for the internationally renowned design studio Claesson Koivisto Rune in Stockholm. Olivia Herms has now started to develop her own projects and the Boule vase series is her second product for Skultuna. Polished brass. Designed 2015.

DESIGN IVAR ÅLENIUS BJÖRK

Ivar Ålenius Björk (1905 – 1978) worked as a sculptor, mostly known for bust portraits. His public ornaments can be seen in many Swedish towns. He also designed a series of brass candlesticks for a Swedish manufacturer called Ystad-Metall that closed down in 1969. The Lily candlestick was one of these products and it has become a modern design classic that has featured in many international design magazines to this day. In agreement with the relatives of Ivar Ålenius Björk, Skultuna has now started the production of the Lily candlestick again. Designed for the world fair in New York 1939. Polished brass and silver plated brass.

DESIGN VINTAGE / THE LINE

Inspired by vintage vessels collected over the years at The Apartment stores in New York and Los Angeles, The Line has partnered with Skultuna to develop a collection of polished brass vases that are both sculptural and functional. The three forms, designed to be used solo or in series, stay true to Skultuna's historic production methods. They are named for their resemblance to beads progressing along a cord. Product release 2017.

CANDLE HOLDERS

NATTLIGHT



BRASS  
No 785-L H: 45 cm

BRASS  
No 785-M H: 36,5 cm

BRASS  
No 785 H: 28 cm

OPAQUE OBJECTS CANDLEHOLDER



TEALIGHT - BRASS  
No 655-7-G H: 4,3 cm,  
Ø: 6,6 cm

CANDLE HOLDER -  
BRASS  
No 655-4-G H: 3 cm,  
Ø: 5,5 cm

TULIP CANDLE STICK



SMALL  
No 82-1 L: 19 cm

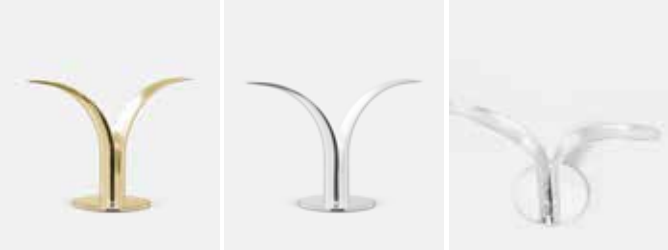
MEDIUM  
No 82-2 L: 21 cm

LARGE  
No 82-3 L: 23 cm



No 82-0 (Set of 3 pcs)  
L: 19 cm, 21 cm, 23 cm

LILY CANDLE STICK



BRASS  
No 782  
H: 12 cm

SILVER PLATED  
No 782-S  
H: 12 cm

DESIGN RICHARD HUTTEN

Richard Hutten is one of the most internationally successful Dutch designers; a key exponent of “Droog Design”, in which he has been involved since it’s inception in 1993. For Skultuna Richard Hutten has designed this elegant candlestick that comes in three sizes. Polished brass. Designed 2011.

DESIGN MARTIN BERGSTRÖM

Inspired by the atmosphere of space and the plant Henbane. For Opaque Object, Martin Bergström wanted to intertwine Skultuna’s 400 years of history and tradition. He researched Skultuna’s rich archives and found the history of the place and the surroundings around Skultuna and got an answer as to why King Charles IX chose this particular place to build the brass mill. The mystique of the burial sites from the Iron Age, the proximity to the Svartå river and the deep forests, the history and traditions around the mill inspired him to connect it with his own design and aesthetics. The archives led Martin Bergström, among other things, to a meteorite that struck a few miles from Skultuna on June 28, 1876. Martin Bergström has built all products in models, which have since been transferred digitally. Designed 2020.

DESIGN PIERRE FORSELL

The candlestick with its straight modern design is a good example on the silversmith Pierre Forssell’s work from the 1970s with the spirit of distant Scandinavian purity. Polished brass. Designed 1970s.

KIN CANDLE HOLDERS



BRASS  
No 763 (Set of 5 pcs)

WHITE  
No 763-W (Set of 5 pcs)

BLACK  
No 763-BL (Set of 5 pcs)



BRASS  
No 763-2-4-5 (Set of 3 pcs)

WHITE  
No 763-W-2-4-5 (Set of 3 pcs)

BLACK  
No 763-BL-2-4-5 (Set of 3 pcs)



BEIGE  
No 763-BG-2-4-5 (Set of 3 pcs)

DUSTY PINK  
No 763-P-2-4-5 (Set of 3 pcs)

MOLE’S GREY  
No 763-M-2-4-5 (Set of 3 pcs)

LONDON COLLECTION



LUNAR SMALL, BRASS  
No 795-XS H: 7 cm

CELESTIAL, BRASS  
No 795-S H: 11 cm

FEATHER, BRASS  
No 795-M H: 14 cm

THEATER CANDLE STICK



No 772 H: 6 cm, Ø: 11 cm

CLAW RING CANDLE STICK



BRASS  
No 776-4  
H: 6 cm, Ø: 10,5 cm

DESIGN CLAESSON KOIVISTO RUNE

Kin is a tea light candle holder with five different models designed by the internationally successful design studio Claesson Koivisto Rune. This is the original series made of polished brass on both the inside and the outside. Designed 2010.

DESIGN LARA BOHINC

The London Collection by Skultuna is designed by the internationally renowned jewellery designer Lara Bohinc. - *It’s amazing to make a collection in brass. I am fascinated by Sweden and Scandinavia. To be working with a renowned company such as Skultuna that stands for tradition, quality and timeless design goes hand in hand with my design and my visions*, says Lara Bohinc. Lara Bohinc is best known for her design language in elegant, timeless jewelry. The inspiration for The London Collection came from travels; the lines of the Lunar pattern is inspired by the highways in Japan, The Celestial is inspired by motions of the planets around the sun and the Feather by the light wing strokes of birds. Designed 2014.

DESIGN THOMAS SANDELL

A new product from the internationally renowned Stockholm based designer Thomas Sandell. The Theater candlestick was developed for the legendary Stockholm restaurant “Teatergrillen”. The candlestick can be seen in the restaurant from now on. Polished brass. Designed 2009.

DESIGN MARIA NILSDOTTER

The Claw series design Maria Nilsson. The Swedish jewelry designer Maria Nilsson studied jewelry design at Central Saint Martins in London, she started her own brand, in her own name, in 2007. Her uncompromising, austere and at the same time luxurious punky design represents something completely new for Skultuna. Maria Nilsson says; “It was exciting to let Skultuna’s world meet mine. I think we have many common values such as the importance of quality and materials but it is also interesting to make use of the contrasts between us. I’m very happy with the outcome that is both timeless, classic and punky”. Designed 2015.



GUARDIAN ANGEL



SMALL - GOLD PLATED No 23 H: 9 cm    MEDIUM - GOLD PLATED No 24 H: 14 cm    SMALL - SILVER PLATED No S23 H: 9 cm    MEDIUM - SILVER PLATED No S24 H: 14 cm

OFFICE CANDLE STICK



BRASS No 68 H: 11 cm

SPIKE CANDLE HOLDER



No 776-1 Ø: 6 cm

SCONCE PENDEL & SCONCE REFLEX



No 71 H: 50 cm    No 79 H: 38 cm

NATTOFFICE



No 785-NO L: 12,5 cm

DESIGN STUDIO SKULTUNA

The Guardian Angel from Skultuna was designed by Carl-Einar Borgström during the 1940s. Carl-Einar Borgström (1914-1981) was a sculptor trained at the Royal Art Academy in Stockholm, he designed a wide range of products, mainly for Ystad Metall. The guardian angel is gold plated and needs only to be wiped with a damp cloth every once in a while to keep its luster through the ages. Designed 1940s.

DESIGNED 1600S

The office candlestick is very characteristic of Skultuna and it has been in production uninterrupted since the foundation of Skultuna in the early 17th century. Polished brass. Designed 1630s.

DESIGN MARIA NILSDOTTER

The Spike Series design Maria Nilsson. The Swedish jewelry designer Maria Nilsson studied jewelry design at Central Saint Martins in London, she started her own brand, in her own name, in 2007. Her uncompromising, austere and at the same time luxurious punky design represents something completely new for Skultuna. Maria Nilsson says: "It was exciting to let Skultuna's world meet mine. I think we have many common values such as the importance of quality and materials but it is also interesting to make use of the contrasts between us. I'm very happy with the outcome that is both timeless, classic and punky". Designed 2016.

DESIGN PIERRE FORSELL

The famous silversmith and designer Pierre Forsell who was working at Skultuna Brass Foundry between 1955-86, designed the sconce Pendel which has become an iconic Skultuna product. Polished brass. Designed 1955.

The designer and silversmith Pierre Forsell designed the sconce "Reflex". The sconce is an ingenious design, which reflect the shining light from the candle. Polished brass. Designed 1970s.

DESIGN RICHARD HUTTEN

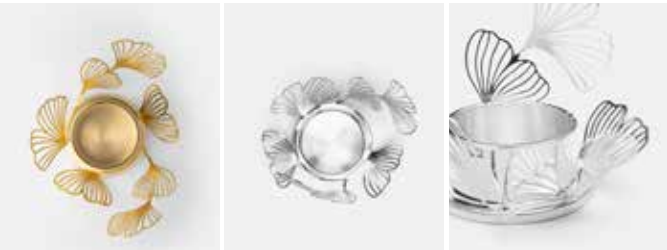
Richard Hutten is one of the most internationally successful Dutch designers; a key exponent of "Droog Design", in which he has been involved since it's inception in 1993. This is a new, elegant candlestick inspired by the oldest known Skultuna product from the 17th century; the Office Candelstick. Polished brass. Designed 2017.

PUZZLE CANDLEHOLDER FOR PROJECT PLAYGROUND



GOLD PLATED No PP120 L: 7,5 cm    STEEL No PP120-S L: 7,5 cm

BK.FLWR CANDLEHOLDER



BRASS No 799-1 H: 6,5 cm, Ø: 9,5 cm    SILVER PLATED No S799-1 H: 6,5 cm, Ø: 9,5 cm

PIPE CANDLEHOLDER



BRASS No 618 L: 10 cm

INFINITY CANDLE HOLDER



SMALL, BRASS No 615 H: 6 cm    SMALL, WHITE No 615-W H: 6 cm    SMALL, DARK GREY No 615-G H: 6 cm



LARGE, BRASS No 616 H: 10 cm    LARGE, WHITE No 616-W H: 10 cm    LARGE, DARK GREY No 616-G H: 10 cm

DESIGN STUDIO SKULTUNA

Project Playground is a non-profit organization that works to support children and young people who live in different forms of vulnerability. The organization was founded in 2010 by Princess Sofia, then Sofia Hellqvist, and Frida Vesterberg. The collaboration between Project Playground and Skultuna began in 2018 and the goal is to generate a number of premium products that strengthen Project Playground both from a symbolic perspective and financially as the surplus goes directly to the business. Made from solid ip-plated steel. Designed 2019.

DESIGN BERNADOTTE & KYLBERG

Skultuna teamed up with the well renowned design duo Bernadotte & Kylberg for the BK.FLWR Candleholder; "Inspired by wild flowers on the side of a path through leafy and magical Swedish summer forests." Designed 2021.

DESIGN BERNADOTTE & KYLBERG

Skultuna has teamed up with the Stockholm-based design studio Bernadotte & Kylberg again. The candleholder Pipe is a reduced modernistic masterpiece in its simplicity where rounded spheres meets in many places to create a magic light. The candleholders are made of solid brass, the iconic material of Skultuna since the start in 1607.

DESIGN BERNADOTTE & KYLBERG

Skultuna teamed up with the well renowned design duo Bernadotte & Kylberg and they created Infinity Candleholder; - "We are proud to be working with Skultuna, a company brand with values that we like. With Infinity we wanted to create a never-ending play with light. By splitting a cylinder, we can place the light reflectors or shields any way we see fit according to the room and space in which they are. Designed 2018.

SKULTUNA ROSE



BRASS  
No 755 Ø: 9,5 cm

SILVER PLATED  
No S755 Ø: 9,5 cm

THE FACTORY SERIES



THE FACTORY  
SKULTUNA  
No 774 H: 8,5 cm

ADVENT CANDELABRA



BRASS  
No 57 H: 70 mm

BOWLS & TRAYS

INK DESKTOP SERIES



No 773-L H: 9 cm, Ø 12 cm

WINECOOLER



WINE COOLER  
No 250 H: 23 cm

DESIGNED 1980S

The model for the Rose is a seal with a Mary rose dated to 1291 from Västerås Cathedral. Designed 1980s.

DESIGN STUDIO SKULTUNA

The Factory is a small etched tea light, the inspiration came from the old factory buildings at the foundry in Skultuna. Etched from brass plate. Designed 2015.

DESIGNED 1980S

The classic Advents candelabra from Skultuna. Polished brass. Designed 1980s.

DESIGN EMMA OLBERS

Emma Olbers was born and raised in Gothenburg. She moved in her twenties to Stockholm where she was educated first at Nyckelvikens art school and then at Beckmans College of Design. In 1999 she founded her studio and Asplund and Ire furniture became major clients. The Ink desktop series is the first collaboration with Skultuna, perfect for the elegant desktop. Designed 2015.

DESIGN STUDIO SKULTUNA

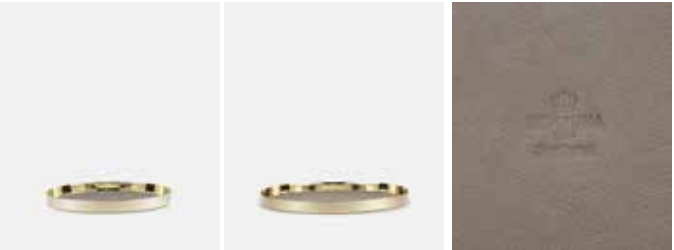
The perfect wine cooler for hot summer days or cold winter nights. The inset is of aluminum. The air gap between the inset and casing provide insulation. The winecooler can also serve as a centrepiece with flower arrangements. Polished brass. Designed 2001 & 2020.

CLAW SERIES



CLAW FOOTED TRAY  
No 776-5 Ø: 15 cm

KARUI TRAYS



MEDIUM Ø: 24 CM  
INK BLUE No 783-MB  
IVORY WHITE No 783-MW  
DARK GREEN No 783-MG  
TAUPE GREY No 783-MGR

LARGE Ø: 34 CM  
INK BLUE No 783-LB  
IVORY WHITE No 783-LW  
DARK GREEN No 783-LG  
TAUPE GREY No 783-LGR

EXTRA LEATHER



TAUPE GREY  
Medium No L783-MGR  
Large No L783-LGR

IVORY WHITE  
Medium No L783-MW  
Large No L783-LW

DARK GREEN  
Medium No L783-MG  
Large No L783-LG

INK BLUE  
Medium No L783-MB  
Large No L783-LB

BALLERINA



No 764-2 H: 3,6 cm, Ø: 12,5 cm

BOWL



SMALL, BLACK  
No 715-S H: 4 cm, Ø 8 cm

SMALL, WHITE  
No 715-V H: 4 cm, Ø 8 cm

LARGE, BLACK  
No 716-S H: 7,5 cm, Ø 12 cm

LARGE, WHITE  
No 716-V H: 7,5 cm, Ø 12 cm

DESIGN MARIA NILSDOTTER

The Claw series design Maria Nilsson. The Swedish jewelry designer Maria Nilsson studied jewelry design at Central Saint Martins in London, she started her own brand, in her own name, in 2007. Her uncompromising, austere and at the same time luxurious punky design represents something completely new for Skultuna. Maria Nilsson says; "It was exciting to let Skultuna's world meet mine. I think we have many common values such as the importance of quality and materials but it is also interesting to make use of the contrasts between us. I'm very happy with the outcome that is both timeless, classic and punky". Designed 2015.

DESIGN GAMFRATESI

The Karui trays are designed by GamFratesi for Skultuna. The trays are made using metal spinning, a classic Skultuna production technique. The leather comes from the leading Swedish tannery Tätnsjö, famous for their high quality leather and located close to Skultuna in Sweden. The GamFratesi studio was founded in 2006 by the Danish architect Stine Gam and the Italian architect Enrico Fratesi. GamFratesi's design takes its creative drive from a fusion of tradition and renewal and in an experimental approach to their chosen materials and techniques. Polished brass. Designed 2015.

KARUI TRAYS – EXTRA LEATHER

Extra Leather for your Karui tray. Available in all four colours, Taupe Grey, Ink Blue, Dark Green och Ivory White.

DESIGN CLAESSON KOIVISTO RUNE

Ballerina is a small unstable bowl designed by the internationally successful designer studio Claesson Koivisto Rune. Polished brass. Designed 2011.

DESIGN OLOF KOLTE

The Swedish industrial designer Olof Kolte has designed this elegant bowl in polished brass that comes in two sizes with a matte powder coated inside in black and white. Designed; Large 2002, Small 2008.



HOME ACCESSORIES



BRASS - SWEDEN  
No 10-1 H: 40 cm



SILVER PLATED - SWEDEN  
No S10-1 H: 40 cm



BRASS - SWEDEN  
No 10-2 H: 47 cm

FLAGPOLE – CLASSIC

Skultuna's classic flagpole, perfect for the board room, National day celebrations or birthdays. The Flagpole is made of polished brass.

FLAGPOLE – MODERN

A new larger flagpole with a modern design, perfect for the board room or the Midsummers table. The Flagpole is made of polished brass.

LAND’S END TRIVET



LAND’S END TRIVET  
No 786 L: 16,5 cm, W: 24 cm



BELLE RING HOLDER



BELLE RING HOLDER  
No 762 H: 11 cm, Ø: 8 cm



DESIGN OBJECTHOOD

The Land's End trivet is designed by the Swedish design studio Objecthood. The trivet is sand cast of solid brass, with a polished surface and a natural, untreated underside. Inspired by 20th century Art Deco, a style characterized by elegance and exclusiveness.Designed 2014.

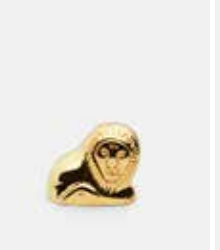
DESIGN CLAESSION KOIVISTO RUNE

Belle is a jewelry box and ring holder designed by the internationally successful designer studio Claesson Koivisto Rune. Polished brass, felt on inside. Designed 2007.

LISA LARSON X SKULTUNA



SITTING LION  
No 803 H: 5,3 cm



LYING LION  
No 804 H: 4,5 cm



CAT  
No 805 H: 8,7 cm



DOG  
No 808 H: 6,8 cm

DESIGN LISA LARSON

Lisa Larson (1931-) and her pottery are renowned representatives of the illustrious Swedish ceramic design of the 20th century. She is well known for her warm-hearted, humorous and sometimes subtly ironic design. Lisa worked for the Gustavsberg factory in 1954-1980. She is represented at the Swedish National Museum of Art and Design.

The figurines are made of solid polished brass.

BARBARA OPENER



BARBARA OPENER  
No 770 L: 10,5 cm, B: 6 cm



DESIGN THOMAS SANDELL

The bottle opener Barbara is designed by Thomas Sandell, one Sweden's most successful designers. The bottle opener is inspired by the fictional character Barbapapa. Designed 2004.

CLAW NAPKIN RING



BRASS  
No 776-7 Ø: 5,5cm



DESIGN MARIA NILSDOTTER

The Claw series design Maria Nilsson. The Swedish jewelry designer Maria Nilsson studied jewelry design at Central Saint Martins in London, she started her own brand, in her own name, in 2007. Her uncompromising, austere and at the same time luxurious punky design represents something completely new for Skultuna. Maria Nilsson says; "It was exciting to let Skultuna's world meet mine. I think we have many common values such as the importance of quality and materials but it is also interesting to make use of the contrasts between us. I'm very happy with the outcome that is both timeless, classic and punky". Designed 2015.

WINE & BOTTLE OPENER, SET



GOLD PLATED  
No 135-MG L: 9 cm



DESIGN STUDIO SKULTUNA

Made from solid ip-plated steel, It features diamond-cut cross knurl pattern and is refined by hand. Designed 2019.

NAPKIN RINGS



NAPKIN RINGS  
No 252 Ø: 4,5 cm



DESIGN STUDIO SKULTUNA

Napkin rings are a must-have for every elegant dinner table. Polished brass. Designed 1988.

OPEN SESAME OPENER



OPEN SESAME OPENER  
No 778 L: 8 cm



DESIGN ERIC ERICSSON

Known for his book "Brev till samhället" (Letters to the society) Eric Ericson is also an artist and designer. His Open Sesame bottle opener is made of sand cast and polished brass. Designed 2017.

DRIP PLATES



DRIP PLATE, SMALL  
SET OF 2PCS  
No 767 Ø: 2,8 cm

DRIP PLATE, LARGE  
SET OF 2PCS  
No 768 Ø: 5 cm

FLORA CANDLE SNUFFER



BRASS  
No 253

FACE WALL HANGERS



MINI  
No 765-XS (3 pcs). Ø 22 mm

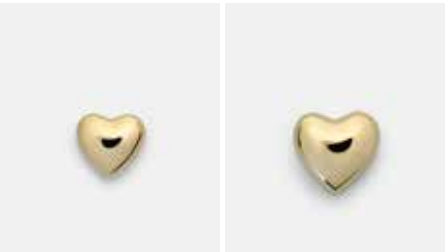
MEDIUM  
No 765-S (3 pcs). Ø 41 mm

PALLINA MAGNIFYING GLASS



MAGNIFYING GLASS  
No 787 H: 5 cm, Ø: 9 cm

HEARTS



MEDIUM  
No 801-B L: 5 cm, W: 5,5 cm

LARGE  
No 802-B L: 6,5 cm, W: 6,5 cm

DESIGN STUDIO SKULTUNA

The elegant Skultuna drip plates are made of polished brass and fits most candlesticks to protect from melting candles.

DESIGN NICK ROSS

Flora is a candlesnuffer with a sculptural quality. When not in use, Flora sits elegantly on a table or shelf as a purely decorative object. The elements of its form - handle, heat guard and snuffer dome - mimic the elements of a daffodil flower - stem, petal and corona. "Flowers have been used through out history as decoration in domestic settings, and have traditionally been popular gifts. So when designing the candlesnuffer I felt the symbol of the flower was a beautiful metaphor to explore for Skultuna." Designed 2020.

DESIGN CLAESSON KOIVISTO RUNE

Face is a series of three wall hangers with different shapes that comes in two sizes, designed by Claesson Koivisto Rune for Skultuna. The wall hangers are cast in solid brass and highly polished to create an almost mirror like surface. The knobs are delivered with screws for wall use and for cabinets. Designed 2012.

DESIGN OLIVIA HERMS

The French-German designer Olivia Herms is currently working for the world famous designer Konstantin Grcic, previously she has worked for the internationally renown design studio Claesson Koivisto Rune in Stockholm. Olivia Herms has now started to develop her own projects and the Pallina magnifying glass for Skultuna is one of the first products to be launched. Designed 2014.

DESIGN STUDIO SKULTUNA

The hearts is always a popular gift and can be used as a paper weight. Polished brass. Designed 1998.

BASSO COASTER



BASSO COASTER  
No 760 Ø: 12cm

DIVOT TOOL



GOLD  
PLATED  
No 125-G

STEEL  
No 125-S

TITANIUM  
BLACK  
No 125-BL L 72MM

RING MY BELL



BRASS / BLACK  
No 718-5

SKULTUNA PLUS



GREEN MARBLE  
No X046 30x30 cm  
No X045 15x15 cm

GREEN MARBLE  
No X040 L:42 cm, W: 11 cm

WHITE CARRARA  
MARBLE  
No X056 30x30 cm  
No X055 15x15 cm

SKULTUNA METAL POLISH



METAL POLISH  
No 200 - 100ml - Ø 70mm

DESIGN CLAESSON KOIVISTO RUNE

Basso is a self centering coaster for champagne and wine bottles designed by the internationally successfull swedish Design studio Claesson Koivisto Rune. Polished brass. Designed 2005.

SKULTUNA DIVOT TOOL

A sleek divot tool for the modern golfer. Made from high grade 316L stainless steel and gold plated.

DESIGN OLOF KOLTE

The Swedish industrial designer Olof Kolte designed this elegant dinner bell called "Ring my Bell" for Skultuna. It is a modern version of the classic school bell from the early 19th century. A perfect fit for the wedding table. Polished brass and wood. H: 18cm. Designed 2001.

DESIGN STUDIO SKULTUNA

This is a new series of products that originally were meant for displaying Skultuna products; strong demand from shops and customers has lead to the product release. Green marble and White Carrara marble. Engraved brass plaque with the Skultuna logotype.

DESIGN STUDIO SKULTUNA

The Skultuna Metal Polish is a unique gentle metal polish that gives all bright metal parts a perfect finish. It works on brass, silver, copper, bronze, tin, aluminium, etc. The special formula protects the surface for a long term.





FLAG SHIP STORE Bruksgatan 8, 726 31 Skultuna, Sweden  
 SKULTUNA STORE STOCKHOLM Grev Turegatan 18, 114 46 Stockholm, Sweden  
 SKULTUNA STORE STOCKHOLM Götgatan 33, 116 21 Stockholm, Sweden  
 SKULTUNA STORE GOTHENBURG Södra Larmgatan 14, 411 16 Göteborg, Sweden  
 FACTORY & OFFICE Bruksgatan 8, 726 31 Skultuna, Sweden

[info@skultuna.com](mailto:info@skultuna.com) [www.skultuna.com](http://www.skultuna.com)

